

## 208~230V 8 Way Cassette

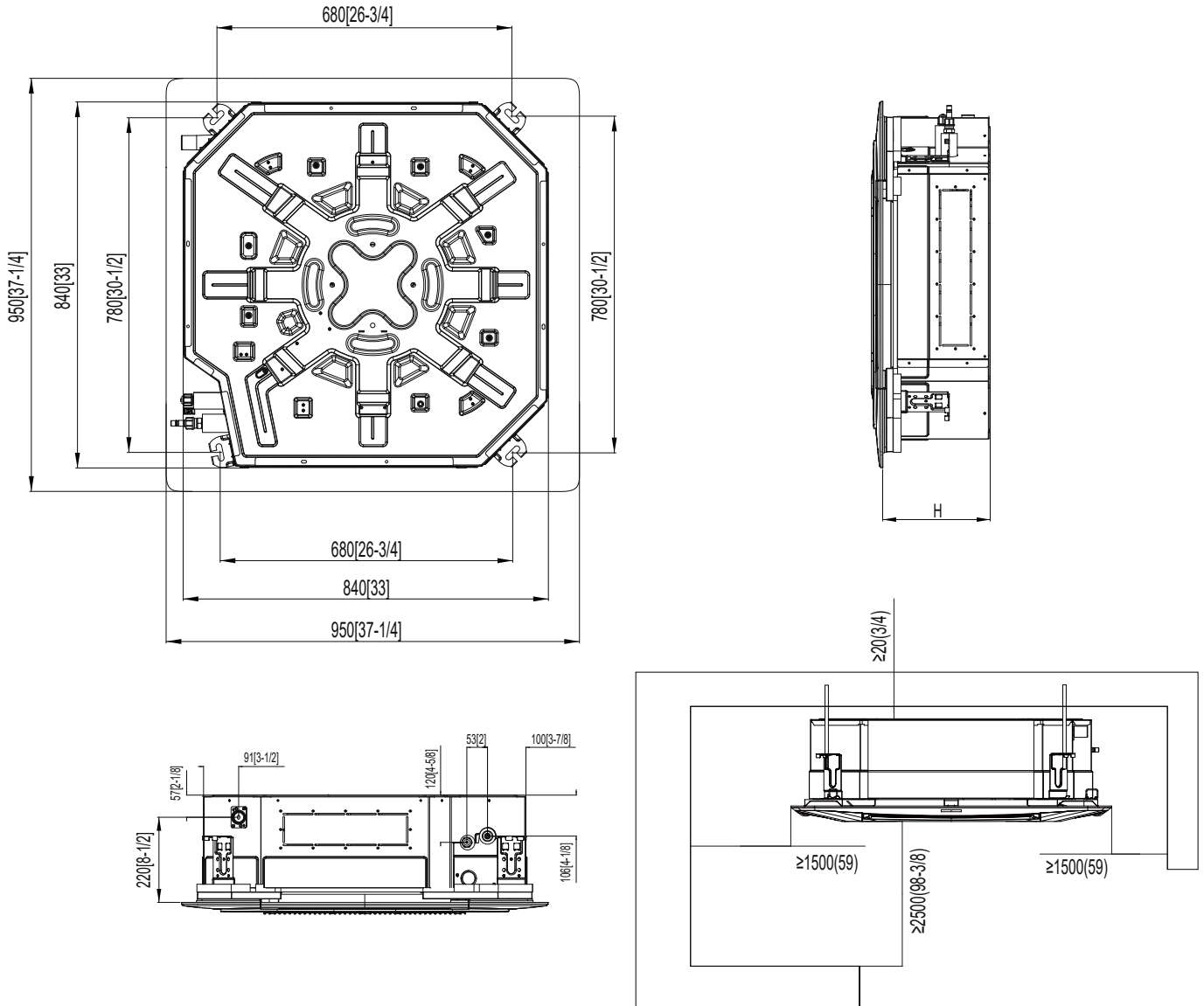
### Model:GMV-ND09T/C-T(U)



Specifications	Unit	Parameter
Model	—	GMV-ND09T/C-T(U)
<b>Performance</b>		
Rated Cooling Capacity	kBtu/h	9.5
Rated Heating Capacity	kBtu/h	10.5
Sound Pressure Level	dB(A)	30/32/34
<b>Electrical Data</b>		
Power Supply	Voltage,Phase, Hertz	208/230,1,60
Maximum Overcurrent Protection (MOP)	A	15
Minimum Circuit Amps (MCA)	A	0.8
<b>Fan</b>		
Type x Quantity	—	Centrifugal×1
Air Flow Volume	CFM	355/410/470
Fan Motor Running Current	A	0.6
Fan Motor Power Output	W	59
<b>Refrigerant Piping</b>		
Connection Pipe	Gas(mm/inch)	Φ9.52/Φ3/8
	Liquid(mm/inch)	Φ6.35/Φ1/4
Connection method	—	Flare Connection
Refrigerant	—	R410A
<b>Dimension/Weight</b>		
Dimensions (H×W×D)	mm/inch	240×840×840 (9-1/2×33-1/8×33-1/8)
Net Weight	kg/lbs	29/64
<b>Other</b>		
Safety Certification	—	ETL

Job Name:		Date:	
System Reference No.:			
Engineer Signature:			

### Outline and Physical Dimensions of GMV-ND09T/C-T(U).



model	H
GMV-ND09T/C-T(U)	280 (11-1/32)

Unit:mm(in.)

