

208~230V Heat Recovery

Model:
GMV-Q360WM/B-F(U)



+



+



Specifications	Unit	Parameter
Model	—	GMV-Q120WM/B-F(U) x 3
Performance		
Rated Cooling Capacity (*1)	kBtu/h	360
Rated Heating Capacity (*2)	kBtu/h	405
Power Input	Cooling(kw)	9.58 x 3
	Heating(kw)	10.42 x 3
Sound Pressure Level	dB(A)	67
Operating Temperature Range	Cooling (Outdoor) °C/°F	-5~52/23~125.6
	Heating (Outdoor) °C/°F	-20~24/-4~75
AHRI Ratings(Ducted/Non-Ducted)		
EER	W/W	9.5/9.6
IEER	—	18/18
COP	W/W	3.2/3.2
Electrical Data		
Power Supply	V/Ph/Hz	208/230/3/60
Maximum Overcurrent Protection (MOP)	A	60 + 60 + 60
Minimum Circuit Amps (MCA)	A	50 + 50 + 50
Fan		
Type x Quantity	—	Axial-flow x 6
Air Flow Volume	CFM	8240 x 3
Fan Motor Power Output	W	750 x 6
Max.External Static Pressure (ESP)	Pa/In.W.G	82/0.33
Compressor		
Compressor Type x Quantity	—	Inverter Scroll x 6
Compressor Refrigerant Oil Type	—	FVC68D or FV-68H
Compressor Refrigerant Oil Charge Volume	L/Gal	6.6/1.74 x 3
Refrigerant Piping		
Connection Pipe	High Pressure Gas(mm/inch)	Φ22.2/Φ7/8
	Low Pressure Gas(mm/inch)	Φ28.6/Φ1-1/8
	Liquid(mm/inch)	Φ12.7/Φ1/2
Max. Equivalent Connection Pipe Length (ODU to IDU)	m/ft	165/541
Refrigerant Charge	kg/oz	11.7/412.7 x 3
Refrigerant	—	R410A
Dimension/Weight		
Dimensions (H×W×D)	mm/inch	1605×1340×765 x 3 (63-1/4×52-3/4×30-1/8) x 3
Net Weight	kg/lbs	360/794 x 3
Other		
Indoor Unit	Total Capacity (%)	50%~135%
	Max Connectable Quantity	25
Certification	—	ETL/AHRI
Condenser Fin Color	—	Gold
Protection Devices	High Pressure	High pressure sensor, High pressure switch 601 psi (4.15 MPa)
	Inverter Circuit	Over-heat protection, Over-current protection
	Compressor	Discharge temp protection, Over-current protection

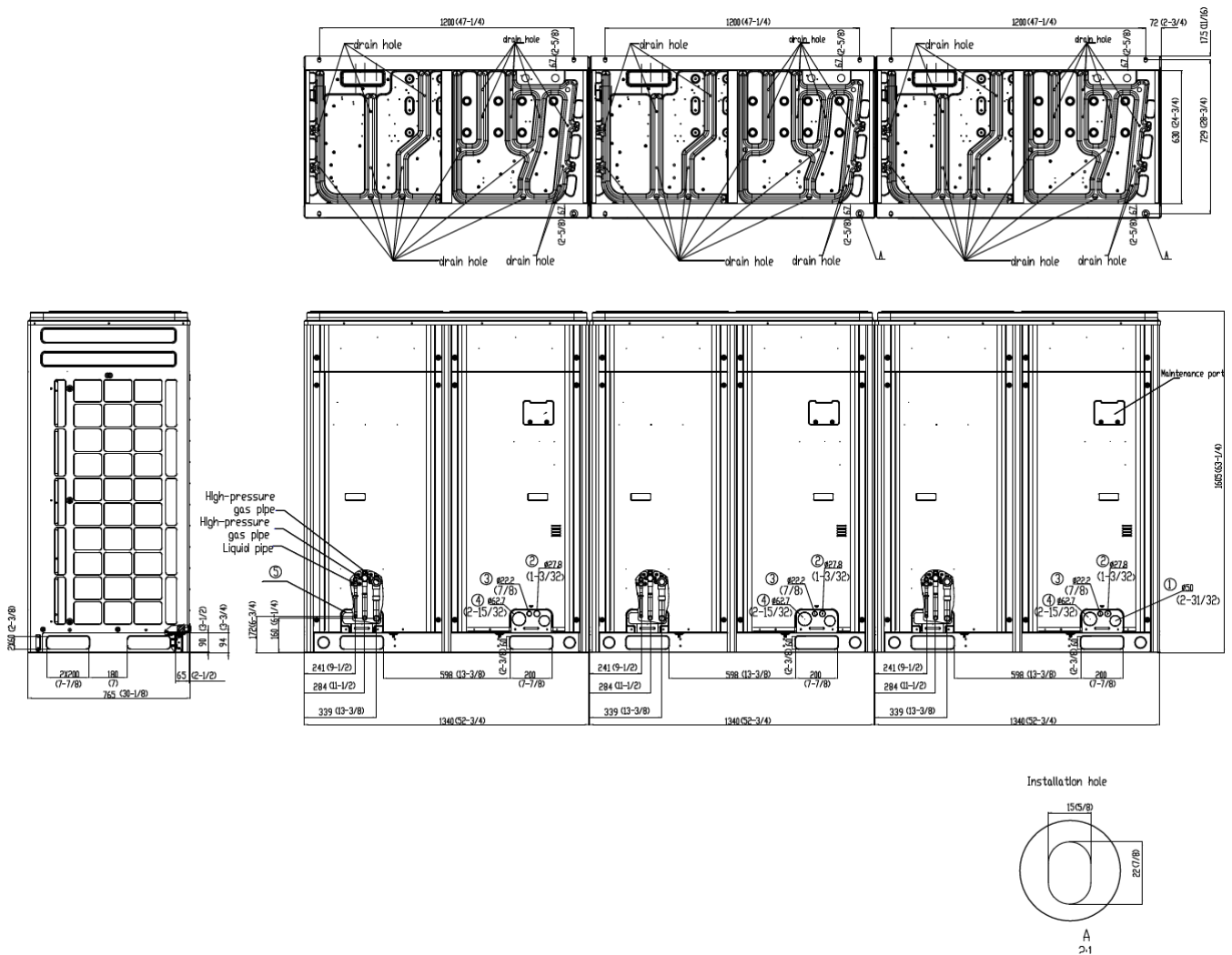
*1 Cooling | Indoor: 80°F (26.7°C) DB / 67°F (19°C) WB; Outdoor: 95°F (35°C) DB

*2 Heating | Indoor: 70°F (21.1°C) DB / Outdoor: 47°F (8.3°C) DB / 43°F (6°C) WB



Job Name:		Date:	
System Reference No.:			
Engineer Signature:			

Outline and Physical Dimensions of GMV-Q360WM/B-F(U)



Unit:mm(in.)

