

208~230V Heat Recovery

Model:
GMV-Q96WM/B-F(U)



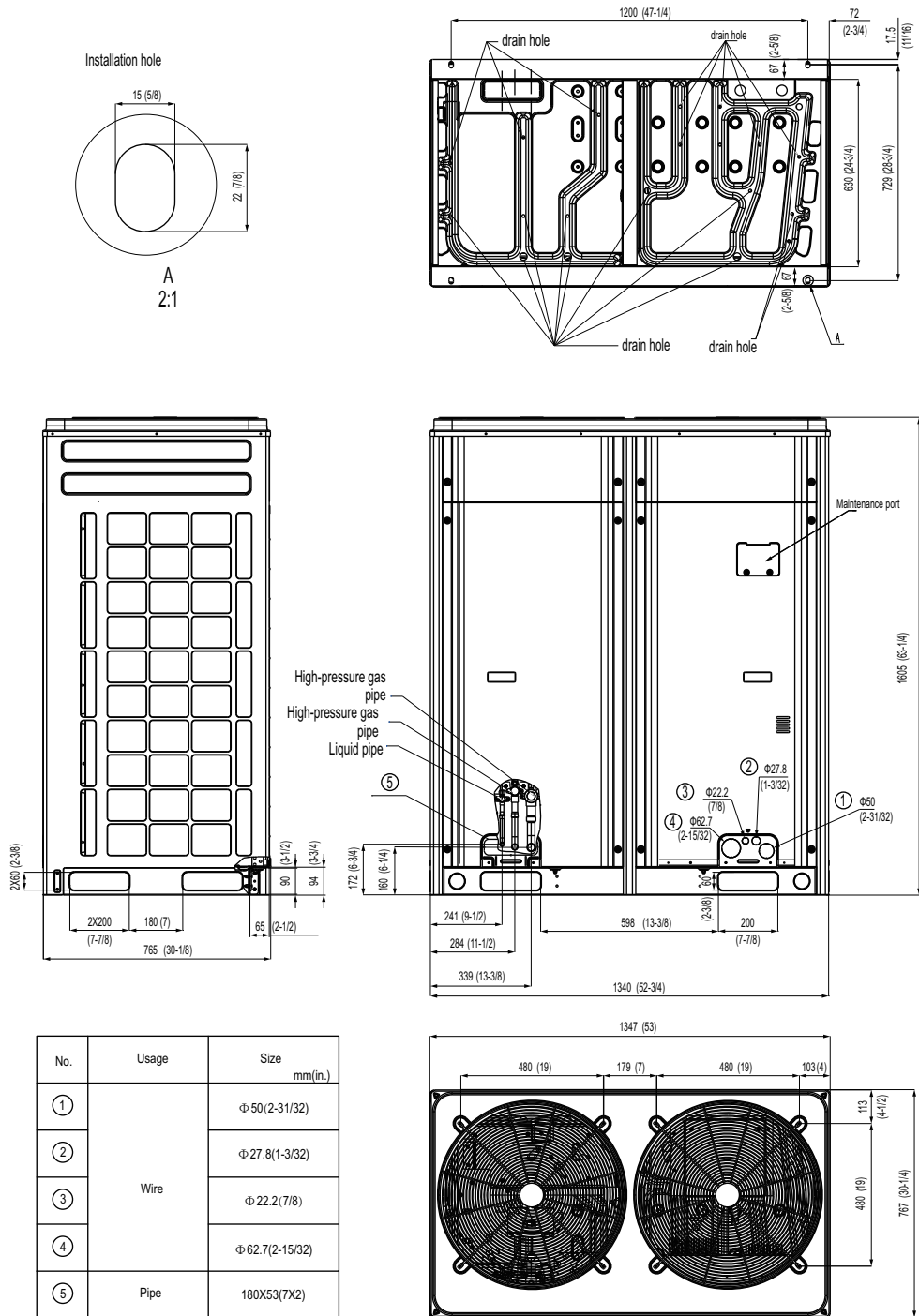
Specifications	Unit	Parameter
Model	—	GMV-Q96WM/B-F(U)
Performance		
Rated Cooling Capacity (*1)	kBtu/h	96
Rated Heating Capacity (*2)	kBtu/h	108
Power Input	Cooling(kw)	7.3
	Heating(kw)	7.85
Sound Pressure Level	dB(A)	62
Operating Temperature Range	Cooling (Outdoor) °C/°F	-5~52/23~125.6
	Heating (Outdoor) °C/°F	-20~24/-4~75
AHRI Ratings(Ducted/Non-Ducted)		
EER	W/W	11/11.2
IEER	—	20.5/23.5
COP	W/W	2.25~3.3/2.4~3.5
Electrical Data		
Power Supply	V/Ph/Hz	208/230/3/60
Maximum Overcurrent Protection (MOP)	A	45
Minimum Circuit Amps (MCA)	A	37
Fan		
Type x Quantity	—	Axial-flow×2
Air Flow Volume	CFM	8240
Fan Motor Power Output	W	750+750
Max.External Static Pressure (ESP)	Pa/In.W.G	82/0.33
Compressor		
Compressor Type x Quantity	—	Inverter Scroll×1
Compressor Refrigerant Oil Type	—	FVC68D or FV-68H
Compressor Refrigerant Oil Charge Volume	L/Gal	5.1/1.35
Refrigerant Piping		
Connection Pipe	High Pressure Gas(mm/inch)	Φ19.05 / Φ3/4
	Low Pressure Gas(mm/inch)	Φ22.2 / Φ7/8
	Liquid(mm/inch)	Φ9.52 / Φ3/8
Max. Equivalent Connection Pipe Length (ODU to IDU)	m/ft	165/541
Refrigerant Charge	kg/oz	11.2/395.1
Refrigerant	—	R410A
Dimension/Weight		
Dimensions (H×W×D)	mm/inch	1605×1340×765 (63-1/4×52-3/4×30-1/8)
Net Weight	kg/lbs	310/683
Other		
Indoor Unit	Total Capacity (%)	50%~135%
	Max Connectable Quantity	16
Certification	—	ETL/AHRI
Condenser Fin Color	—	Gold
Protection Devices	High Pressure	High pressure sensor, High pressure switch 601 psi (4.15 MPa)
	Inverter Circuit	Over-heat protection, Over-current protection
	Compressor	Discharge temp protection, Over-current protection

*1 Cooling | Indoor: 80°F (26.7°C) DB / 67°F (19°C) WB; Outdoor: 95°F (35°C) DB
*2 Heating | Indoor: 70°F (21.1°C) DB / Outdoor: 47°F (8.3°C) DB / 43°F (6°C) WB



Job Name:		Date:	
System Reference No.:			
Engineer Signature:			

Outline and Physical Dimensions of GMV-Q96WM/B-F(U).



Unit:mm(in.)

