

Electric Heater Kit

INSTALLATION MANUAL

Electric Heater Kit

MODELS:

ELEMHT18-5KW
ELEMHT18-8KW
ELEMHT18-10KW
ELEMHT18-15KW
ELEMHT18-20KW

Thank you for choosing our product.
Please read this Installation & Owner's Manual carefully before operation and retain it for future reference.

If you lose this Manual, please contact your local distributor visit www.greehvac.ca now to download an file the electronic version.



ATTENTION INSTALLING PERSONNEL

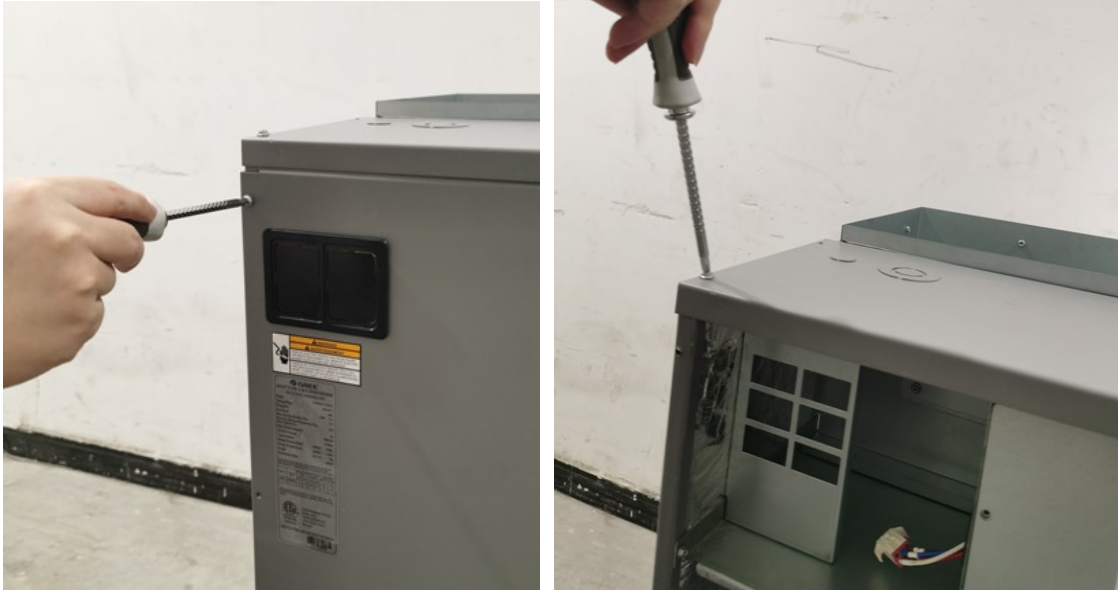
Prior to installation, thoroughly familiarize yourself with this Installation Manual. Observe all safety warnings. During installation or repair, caution is to be observed
It is your responsibility to install the product safely and to educate the customer on its safe use

CAUTIONS

- ENSURE THAT ALL POWER IS DISCONNECTED PRIOR TO ATTEMPTING INSTALLATION OF THIS HEATER KIT. THERE MAY BE MORE THAN ONE DISCONNECT SERVICING THE UNIT.
- A MEANS OF STRAIN RELIEF AND CONDUCTOR PROTECTION MUST BE PROVIDED AT THE SUPPLY WIRE ENTRANCE INTO CABINET.
- USE COPPER CONDUCTORS ONLY
- INSTALLATION MUST FOLLOW NATIONAL ELECTRIC CODE AND OTHER APPLICABLE CODES

IF THIS APPLIANCE IS INSTALLED IN AN ENCLOSED AREA SUCH AS A GARAGE OR UTILITY ROOM WITH ANY CARBON MONOXIDE PRODUCING APPLIANCE, ENSURE THE AREA IS PROPERLY VENTILATED

1. Remove the front panel and upper access panel from the air handler.



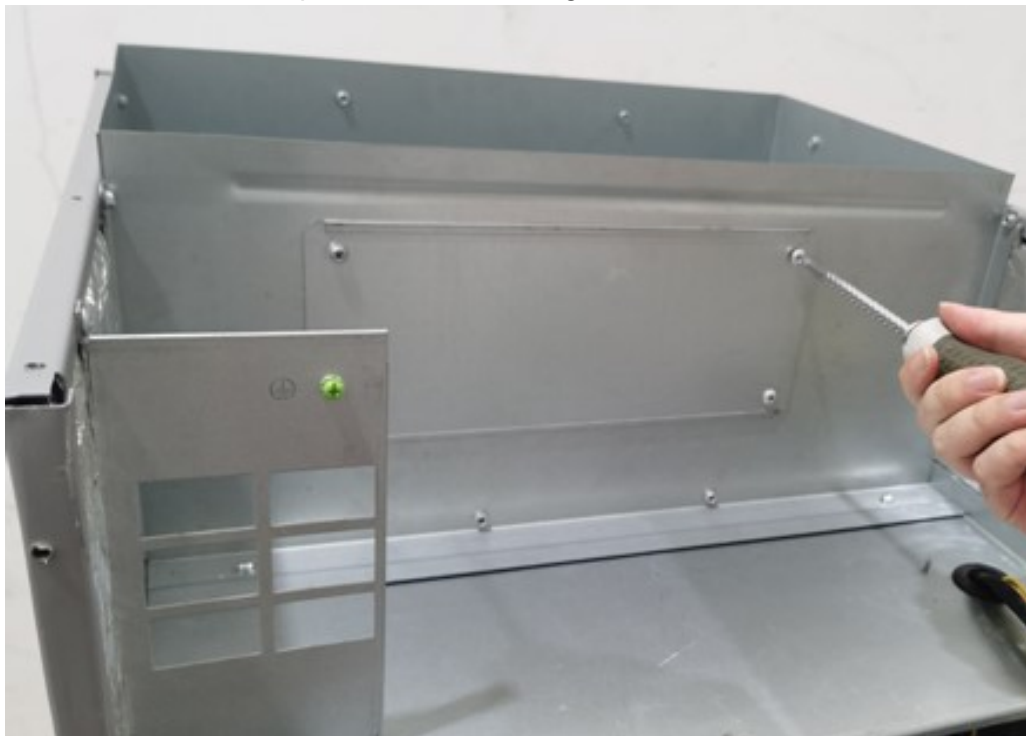
2. Disassemble the electrical box



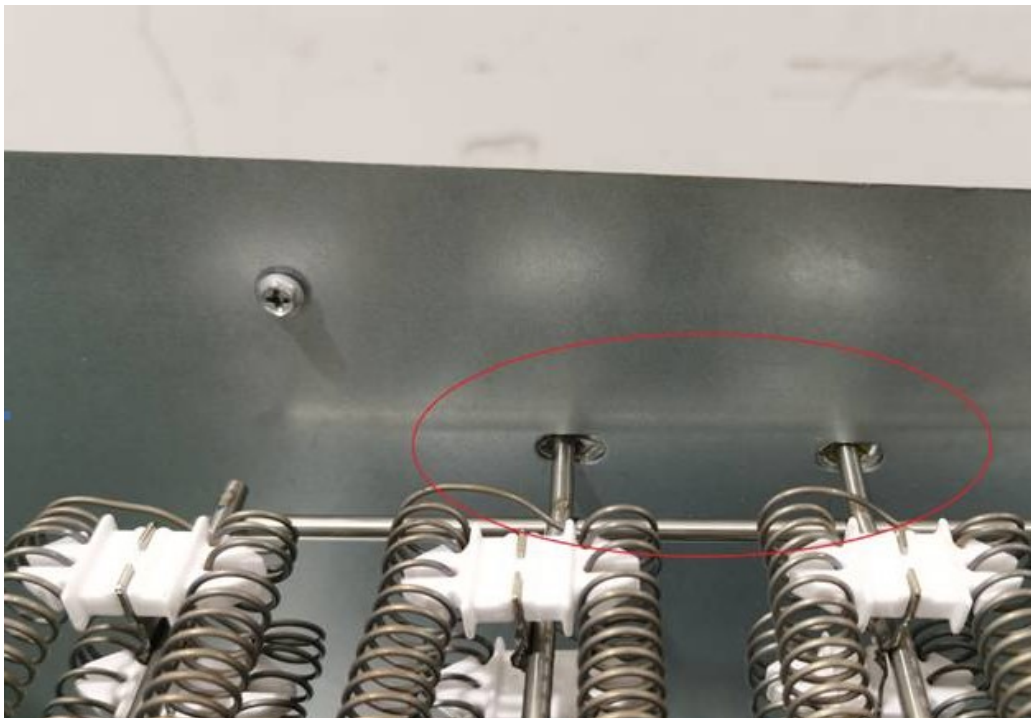
3. Remove the electrical box



4. Disassemble the metal plate at the mounting hole of the electric heater



5. Install the electric heater to the metal plate position which disassembles in step 4. (Notes: There are two holes circled below which are used to fasten the electric heater bracket during installation)



6. Install breaker (Notes: When installation, you need to lift up the buckle first, hold the breaker bracket and then put down the buckle to fix the breaker)



7. Connect the electric heater terminal



8. After installation, the schematic diagram is as follows:



9. Install the electrical box back to the original position



10. Install the front panel and upper panel back to the air handler. Electric heater installation is completed.

Electric Heater Kits

Model	Cooling capacity(ton)	Optional electric heater	
GUD24, 36AH2/AD(U)	2.0/ 3.0	ELEMHT18-5KW	5
GUD24, 36AH2/AD(U)	2.0/ 3.0	ELEMHT18-8KW	8
GUD24, 36, 48, 60AH2/AD(U)	2.0/ 3.0 / 4.0 / 5.0	ELEMHT18-10KW	10
GUD48, 60AH2/AD(U)	4.0 / 5.0	ELEMHT18-15KW	15
GUD48, 60AH2/AD(U)	4.0 / 5.0	ELEMHT18-20KW	20



AirTek Canada Inc.

E-mail: Airtek@Greehvac.ca

Contractor Support: 833-666-4733 | Mon-Fri 8 AM - 6 PM

G R E E H V A C . C A