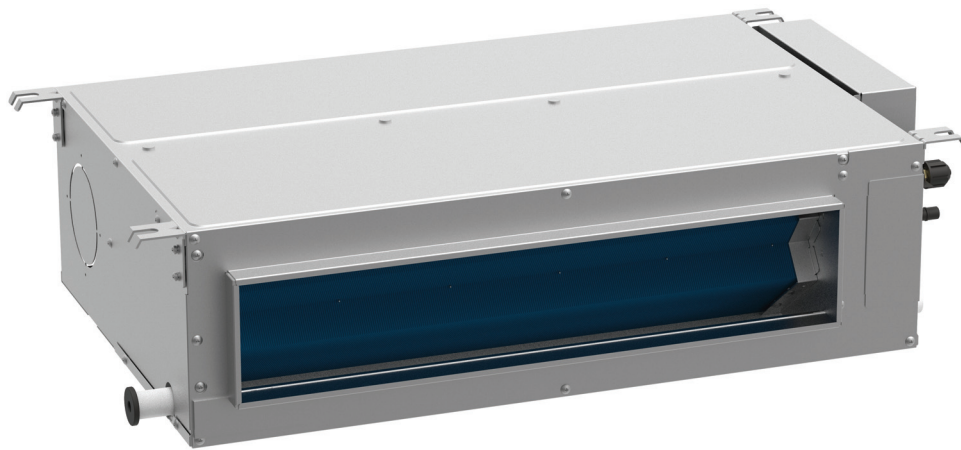


208~230V Low ESP Fan Coil

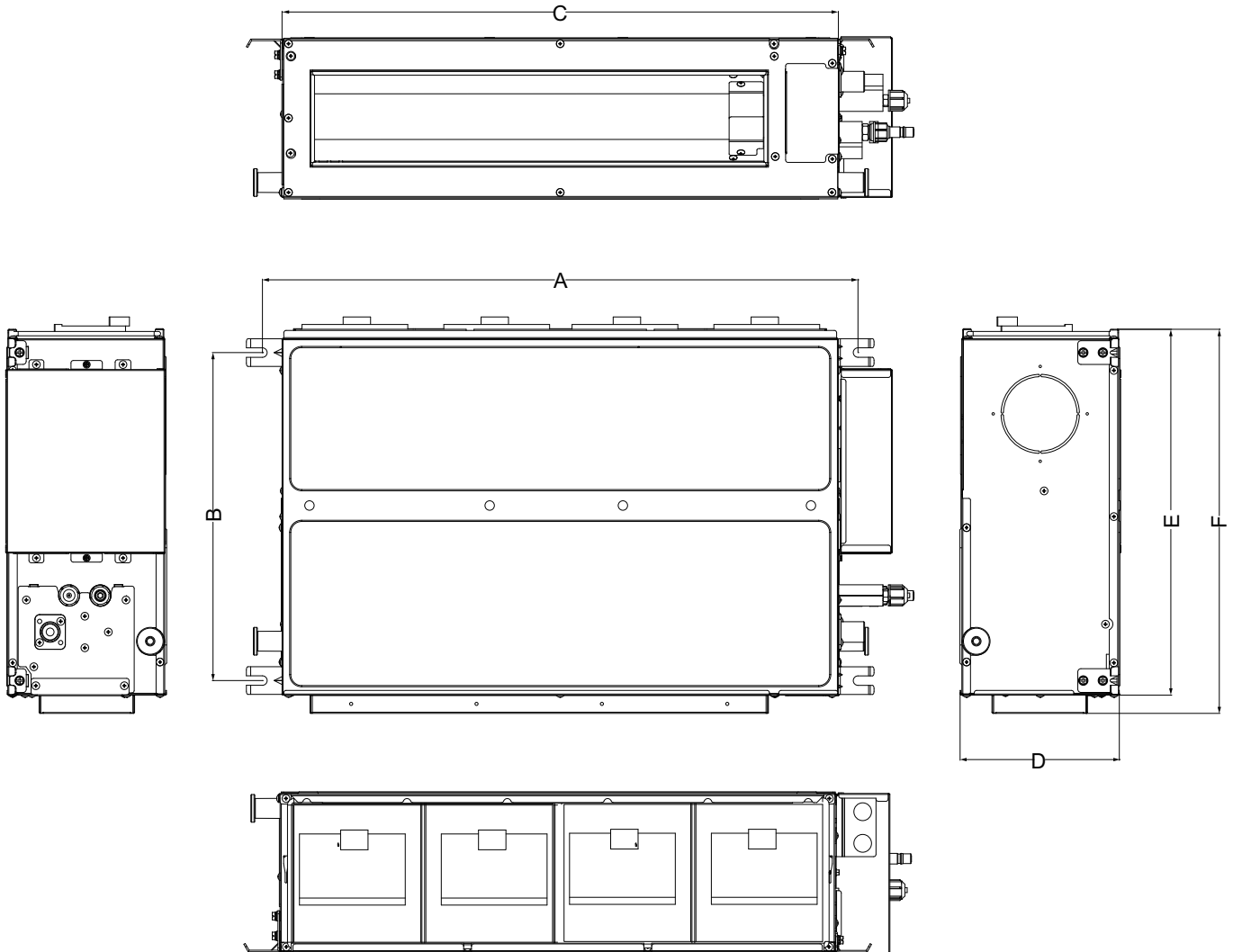
Model:GMV-ND12PLS/B-T(U)



| Specifications | Unit | Parameter |
|--------------------------------------|----------------------|---|
| Model | — | GMV-ND12PLS/B-T(U) |
| Performance | | |
| Rated Cooling Capacity | kBtu/h | 12 |
| Rated Heating Capacity | kBtu/h | 13.5 |
| Sound Pressure Level | dB(A) | 25/27/31 |
| Electrical Data | | |
| Power Supply | Voltage,Phase, Hertz | 208/230,1,60 |
| Maximum Overcurrent Protection (MOP) | A | 15 |
| Minimum Circuit Amps (MCA) | A | 1 |
| Fan | | |
| Type × Quantity | — | Centrifugal x2 |
| Air Flow Volume | CFM | 177/235/324 |
| ESP | Pa | 0~30 |
| Fan Motor Running Current | A | 0.8 |
| Fan Motor Power Output | W | 30 |
| Refrigerant Piping | | |
| Connection Pipe | Gas(mm/inch) | Φ12.7/Φ1/2 |
| | Liquid(mm/inch) | Φ6.35/Φ1/4 |
| Connection method | — | Flare Connection |
| Refrigerant | — | R410A |
| Dimension/Weight | | |
| Dimensions (H×W×D) | mm/inch | 200×710×462 (7-7/8×27-15/16×18-3/16) |
| Net Weight | kg/lbs | 19/42 |
| Other | | |
| Safety Certification | — | ETL |

| | | | |
|-----------------------|--|-------|--|
| Job Name: | | Date: | |
| System Reference No.: | | | |
| Engineer Signature: | | | |

Outline and Physical Dimensions of GMV-ND12PLS/B-T(U).



| Item Model | Unit | A | B | C | D | E | F |
|--------------------|------|-----|--------|----------|-------|---------|--------|
| GMV-ND12PLS/B-T(U) | mm | 760 | 415 | 710 | 200 | 462 | 486 |
| | inch | 30 | 16-3/8 | 27-15/16 | 7-7/8 | 18-3/16 | 19-1/8 |

