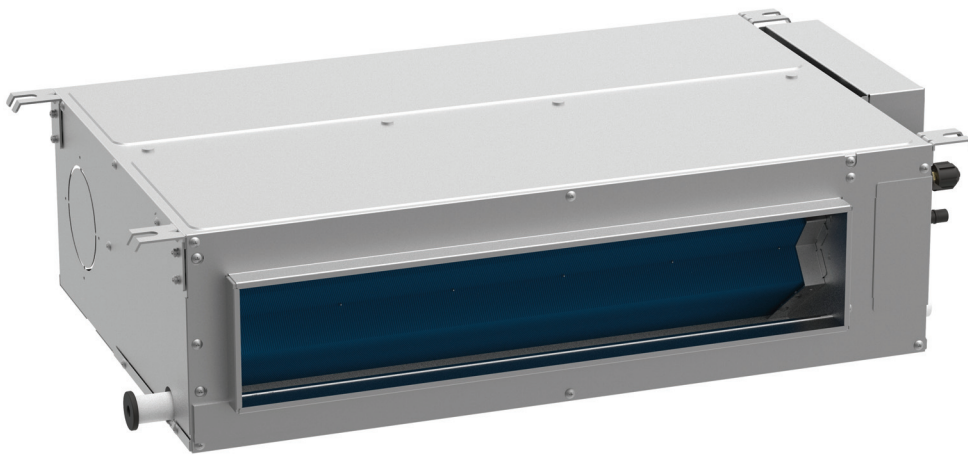


208~230V Low ESP Fan Coil

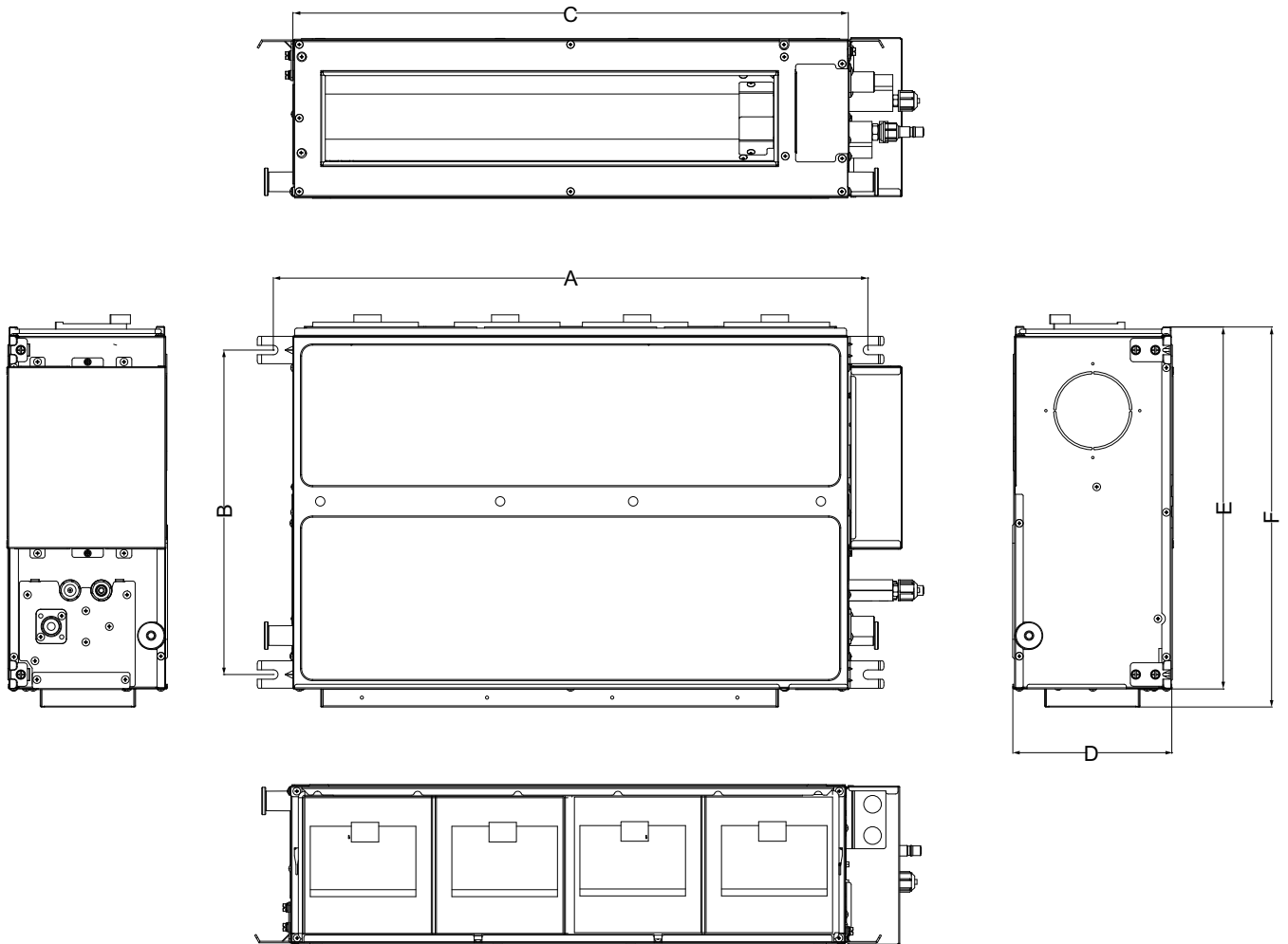
Model:GMV-ND24PLS/B-T(U)



Specifications	Unit	Parameter
Model	—	GMV-ND24PLS/B-T(U)
Performance		
Rated Cooling Capacity	kBtu/h	24
Rated Heating Capacity	kBtu/h	27
Sound Pressure Level	dB(A)	30/32/37
Electrical Data		
Power Supply	Voltage,Phase, Hertz	208/230,1,60
Maximum Overcurrent Protection (MOP)	A	15
Minimum Circuit Amps (MCA)	A	1
Fan		
Type × Quantity	—	Centrifugal x4
Air Flow Volume	CFM	383/500/647
ESP	Pa	0~30
Fan Motor Running Current	A	0.8
Fan Motor Power Output	W	80
Refrigerant Piping		
Connection Pipe	Gas(mm/inch)	Φ15.9/Φ5/8
	Liquid(mm/inch)	Φ9.52/Φ3/8
Connection method	—	Flare Connection
Refrigerant	—	R410A
Dimension/Weight		
Dimensions (H×W×D)	mm/inch	200×1310×462 (7-7/8×51-1/2×18-3/16)
Net Weight	kg/lbs	31/68
Other		
Safety Certification	—	ETL

Job Name:		Date:	
System Reference No.:			
Engineer Signature:			

Outline and Physical Dimensions of GMV-ND24PLS/B-T(U).



Item Model	Unit	A	B	C	D	E	F
GMV-ND24PLS/B-T(U)	mm	1360	415	1310	200	462	486
	inch	53-1/2	16-3/8	51-9/16	7-7/8	18-3/16	19-1/8

