

## 208~230V Heat Recovery

Model:  
GMV-Q144WM/B1-F(U)



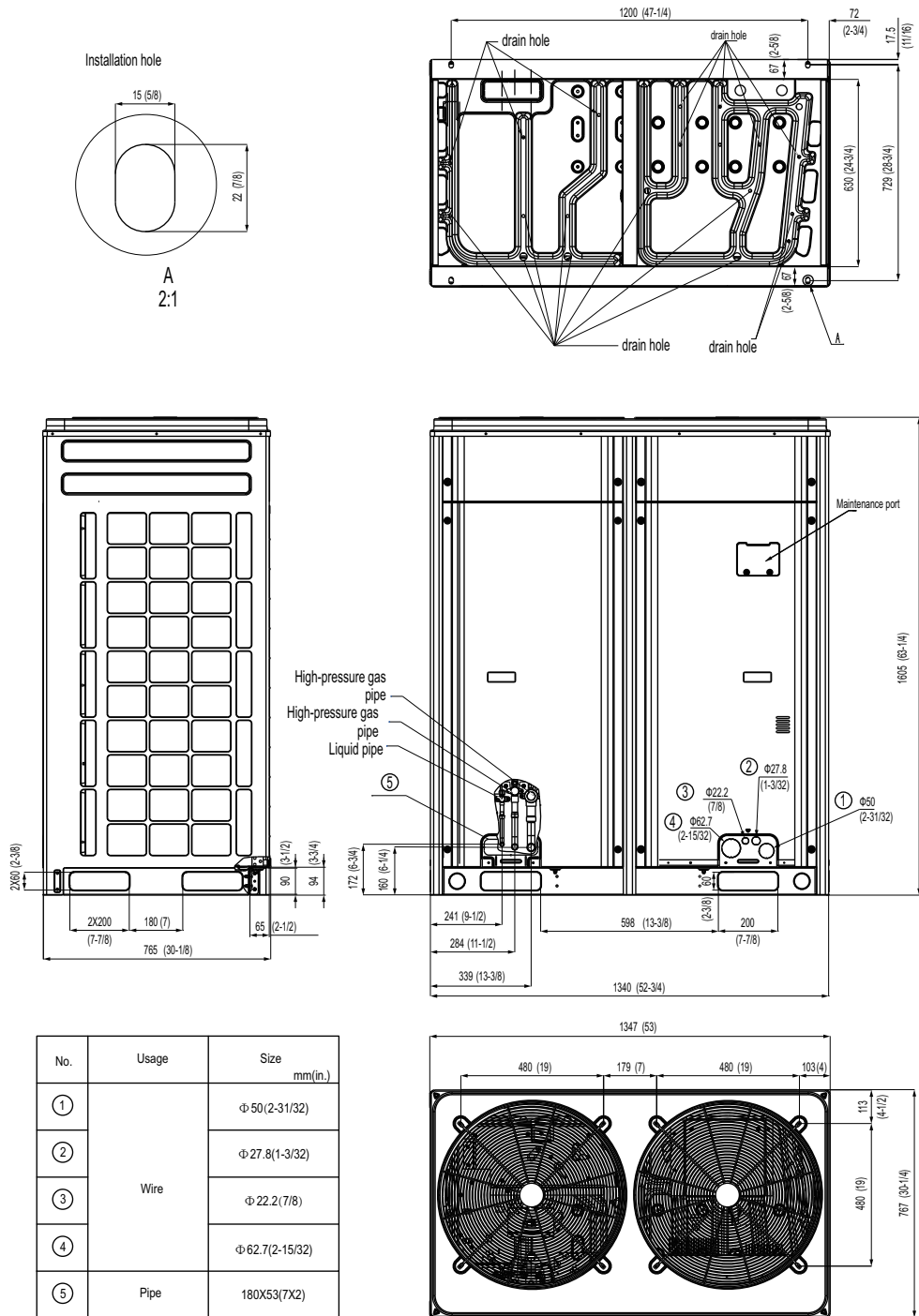
Specifications	Unit	Parameter
Model	—	GMV-Q144WM/B1-F(U)
<b>Performance</b>		
Rated Cooling Capacity ( *1 )	kBtu/h	144
Rated Heating Capacity ( *2 )	kBtu/h	162
Power Input	Cooling(kw)	12.93
	Heating(kw)	12.8
Sound Pressure Level	dB(A)	64
Operating Temperature Range	Cooling ( Outdoor ) °C/°F	-5~52/23~125.6
	Heating ( Outdoor ) °C/°F	-20~24/-4~75
<b>AHRI Ratings(Ducted/Non-Ducted)</b>		
EER	W/W	10.6/10.6
IEER	—	19/22
COP	W/W	2.05~3.2/2.2~3.55
<b>Electrical Data</b>		
Power Supply	V/Ph/Hz	208/230/3/60
Maximum Overcurrent Protection (MOP)	A	70
Minimum Circuit Amps (MCA)	A	55
<b>Fan</b>		
Type x Quantity	—	Axial-flow×2
Air Flow Volume	CFM	8240
Fan Motor Power Output	W	750+750
Max.External Static Pressure ( ESP )	Pa/In.W.G	82/0.33
<b>Compressor</b>		
Compressor Type x Quantity	—	Inverter Scroll×2
Compressor Refrigerant Oil Type	—	FVC68D or FV-68H
Compressor Refrigerant Oil Charge Volume	L/Gal	7.2/1.9
<b>Refrigerant Piping</b>		
Connection Pipe	High Pressure Gas(mm/inch)	Φ22.2/Φ7/8
	Low Pressure Gas(mm/inch)	Φ28.6/Φ1-1/8
	Liquid(mm/inch)	Φ12.7/Φ1/2
Max. Equivalent Connection Pipe Length ( ODU to IDU )	m/ft	165/541
Refrigerant Charge	kg/oz	11.7/412.7
Refrigerant	—	R410A
<b>Dimension/Weight</b>		
Dimensions (H×W×D)	mm/inch	1605×1340×765 (63-1/4×52-3/4×30-1/8)
Net Weight	kg/lbs	370/816
<b>Other</b>		
Indoor Unit	Total Capacity ( % )	50%~135%
	Max Connectable Quantity	23
Certification	—	ETL/AHRI
Condenser Fin Color	—	Gold
Protection Devices	High Pressure	High pressure sensor, High pressure switch 601 psi (4.15 MPa)
	Inverter Circuit	Over-heat protection, Over-current protection
	Compressor	Discharge temp protection, Over-current protection

\*1 Cooling | Indoor: 80°F ( 26.7°C ) DB / 67°F ( 19°C ) WB; Outdoor: 95°F ( 35°C ) DB  
\*2 Heating | Indoor: 70°F ( 21.1°C ) DB / Outdoor: 47°F ( 8.3°C ) DB / 43°F ( 6°C ) WB



Job Name:		Date:	
System Reference No.:			
Engineer Signature:			

### Outline and Physical Dimensions of GMV-Q144WM/B1-F(U).



Unit:mm(in.)

