

## 208~230V Heat Recovery

Model:  
GMV-Q336WM/B-F(U)



+



+



| Specifications  | Unit                                       | Parameter   |
|---|--|---|
| Model   | — GMV-Q120WM/B-F(U) x 2 + GMV-Q96WM/B-F(U) |   |
| <b>Performance</b>                                    |  |   |
| Rated Cooling Capacity ( *1 )                         | kBtu/h                                     | 336   |
| Rated Heating Capacity ( *2 )                         | kBtu/h                                     | 378   |
| Power Input   | Cooling(kw)                                | 26.46   |
|   | Heating(kw)                                | 28.69   |
| Sound Pressure Level                                  | dB(A)                                      | 67  |
| Operating Temperature Range                           | Cooling ( Outdoor ) °C/°F                  | -5~52/23~125.6  |
|   | Heating ( Outdoor ) °C/°F                  | -20~24/-4~75  |
| <b>AHRI Ratings(Ducted/Non-Ducted)</b>                |  |   |
| EER   | W/W  | 9.8/10  |
| IEER  | —  | 19/20   |
| COP   | W/W  | 3.3/3.3   |
| <b>Electrical Data</b>                                |  |   |
| Power Supply  | V/Ph/Hz                                    | 208/230/3/60  |
| Maximum Overcurrent Protection ( MOP)                 | A  | 60 + 60 + 45  |
| Minimum Circuit Amps ( MCA)                           | A  | 50 + 50 + 37  |
| <b>Fan</b>  |  |   |
| Type x Quantity                                       | —  | Axial-flow x 6  |
| Air Flow Volume                                       | CFM  | 24720   |
| Fan Motor Power Output                                | W  | 750 x 6   |
| Max.External Static Pressure ( ESP )                  | Pa/In.W.G                                  | 82/0.33   |
| <b>Compressor</b>                                     |  |   |
| Compressor Type x Quantity                            | —  | Inverter Scroll x 5   |
| Compressor Refrigerant Oil Type                       | —  | FVC68D or FV-68H  |
| Compressor Refrigerant Oil Charge Volume              | L/Gal                                      | 6.6/1.74 x 3  |
| <b>Refrigerant Piping</b>                             |  |   |
| Connection Pipe                                       | High Pressure Gas(inch)                    | Φ1-1/8  |
|   | Low Pressure Gas(inch)                     | Φ1-3/8  |
|   | Liquid(mm/inch)                            | Φ3/4  |
| Max. Equivalent Connection Pipe Length ( ODU to IDU ) | m/ft                                       | 165/541   |
| Refrigerant Charge                                    | kg/oz                                      | 34.60   |
| Refrigerant   | —  | R410A   |
| <b>Dimension/Weight</b>                               |  |   |
| Dimensions (H×W×D)                                    | mm/inch                                    | 1605×1340×765 x 3<br>(63-1/4×52-3/4×30-1/8) x 3               |
| Net Weight/Gross                                      | lbs  | 1030/1075   |
| <b>Other</b>  |  |   |
| Indoor Unit   | Total Capacity ( % )                       | 50%~135%  |
|   | Max Connectable Quantity                   | 56  |
| Certification   | —  | ETL/AHRI  |
| Condenser Fin Color                                   | —  | Gold  |
| Protection Devices                                    | High Pressure                              | High pressure sensor, High pressure switch 601 psi (4.15 MPa) |
|   | Inverter Circuit                           | Over-heat protection, Over-current protection                 |
|   | Compressor                                 | Discharge temp protection, Over-current protection            |

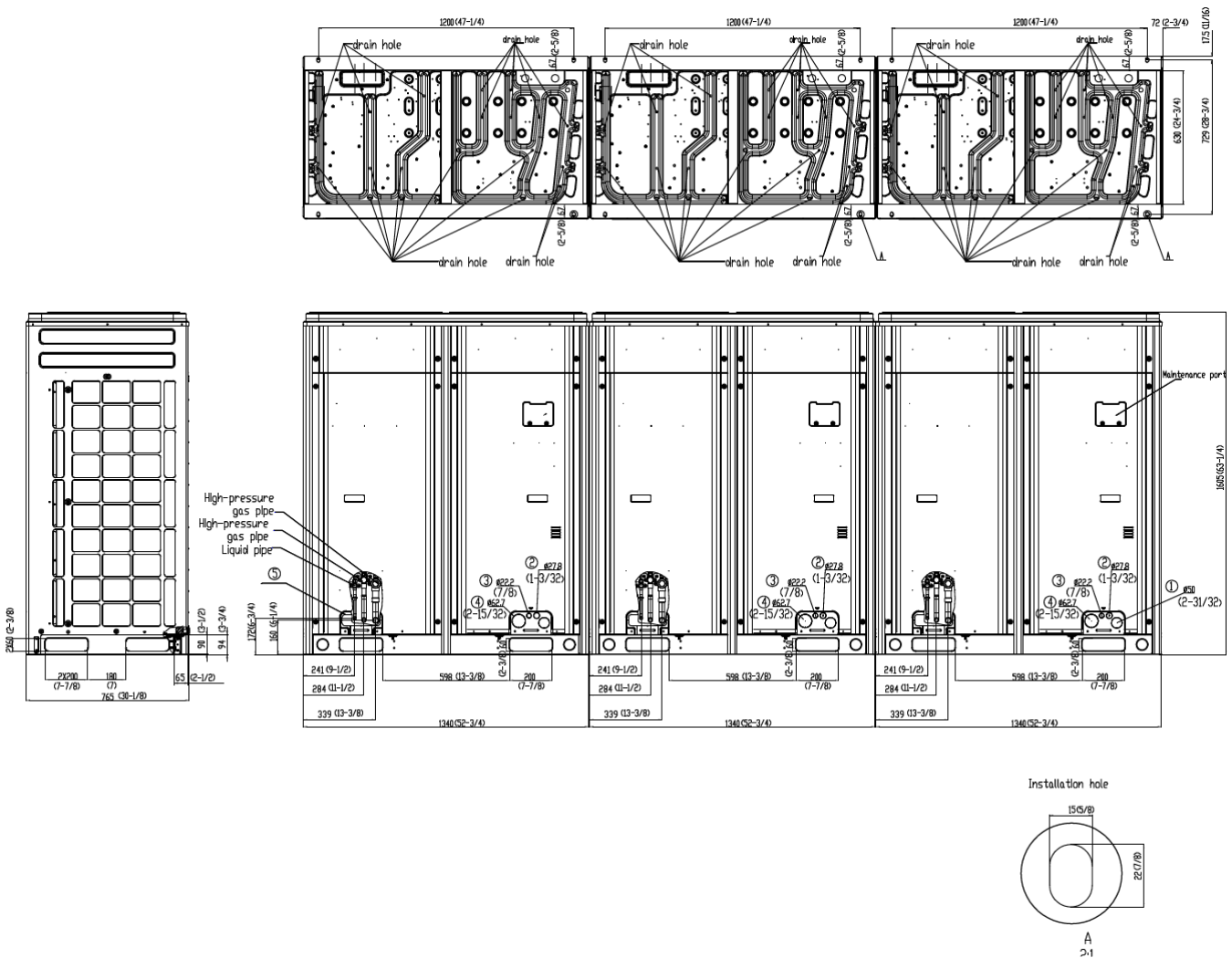
\*1 Cooling | Indoor: 80°F ( 26.7°C ) DB / 67°F ( 19°C ) WB; Outdoor: 95°F ( 35°C ) DB

\*2 Heating | Indoor: 70°F ( 21.1°C ) DB / Outdoor: 47°F ( 8.3°C ) DB / 43°F ( 6°C ) WB



|                       |  |       |  |
|-----------------------|--|-------|--|
| Job Name:             |  | Date: |  |
| System Reference No.: |  |       |  |
| Engineer Signature:   |  |       |  |

### Outline and Physical Dimensions of GMV-Q336WM/B-F(U).



Unit:mm(in.)

